

SUTTON
COMMUNITY
ACADEMY



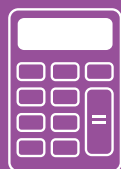
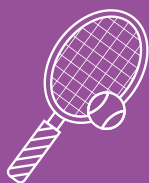
Academy
Transformation
Trust Further Education

Post 16 Prospectus

SCA⁶ & ATT Further Education

2021- 2022





Welcome to Sutton Community Academy

At Sutton Community Academy, our aim is to provide young people with the qualifications, skills and attributes to have a successful and happy life. We believe everyone has hidden potential to be uncovered and nurtured.

The academy offers a small, close-knit community where our students are safe, secure and supported to achieve the best outcomes possible. Our dedicated teams of staff are friendly and professional, and thoroughly committed to the values of

education and welfare. Enhancements in the provision and use of modern technologies, along with the facilities that are continually improving, allow us to further transform the learning of our young people.

Every member of our academy community is expected to treat others with respect; we have high expectations for the attendance, punctuality, behaviour and outcomes of all our students.



Our Post 16 Provision

Our Post-16 provision is facilitated by our Sixth Form, SCA6, and the ATT Further Education College, which is also based on site. Together, they allow us to offer a wide range of academic and vocational courses to cater to all styles of learning.

We want our students to gain the very best foundation for their futures, whether that involves university, further education, apprenticeships or employment. We never push students into one particular type of course, as we know the best way to help them achieve their goals is by opening up a variety of pathways to suit individual styles of learning.

We get to know our students very well, which helps us to provide them with guidance as they move on to the next stage of their education. Our course leaders are always happy to discuss the details and outcomes of the qualifications we offer. We're also proud to maintain a dedicated career advisor, whose expert industry knowledge is invaluable in helping

students to navigate their options, enabling them to make the best choices to support their ambitions for the future.

Our sixth form and further education college aren't just aimed at our current students; we're dedicated to improving and expanding our provision to better serve people from the communities around us. We look forward to welcoming students and ambitious adult learners from other local schools to the SCA and ATTFE family.

Scan the QR code or follow this link to apply:
<https://bit.ly/31MkPbL>



Principal's Welcome



Over the coming months, you will be considering the next stage of your education, and how best to gain the foundation of social and academic skills so vital to securing employment and further education in this rapidly changing world.

SCA6 offers more than just a wide range of courses with a proven and improving track record of success; our enrichment programme includes personal, social and health education, community action, enterprise business opportunities as well as sport and recreation facilities.

We aim to know our students very well- because of this unwavering pastoral care and support, we can guide them on to courses that offer them the best chance of success, whether this means studying with us or our partners at ATT Further Education. Our growing reputation both locally and nationally means we're accepting more and more students from other schools in the local area.

I wish you all the very best in the next phase of your education.

Patrick Butterell
Principal, Sutton Community
Academy

Message from the Head of Sixth Form



At Sutton Community Academy, learning is at the heart of all we do. We want students entering our Sixth Form to be independent, intellectually curious young people who can demonstrate ambition and dedication to their learning journey. Our dedicated and professional teaching staff ensure that every student is both challenged to achieve at the very best of their ability, and supported as they progress to this next step of their education.

We recognise that Sixth Form is a key transitional period from secondary education to higher education or the start of a career; it is as important that social as well as academic skills are developed in these years. We focus not only on helping our students to achieve academically, but providing them with important transferable skills that will help them to thrive once they leave our academy.

We look forward to welcoming you in September.

Neil Groves
Head of Sixth Form

Message from the Principal of ATT Further Education College



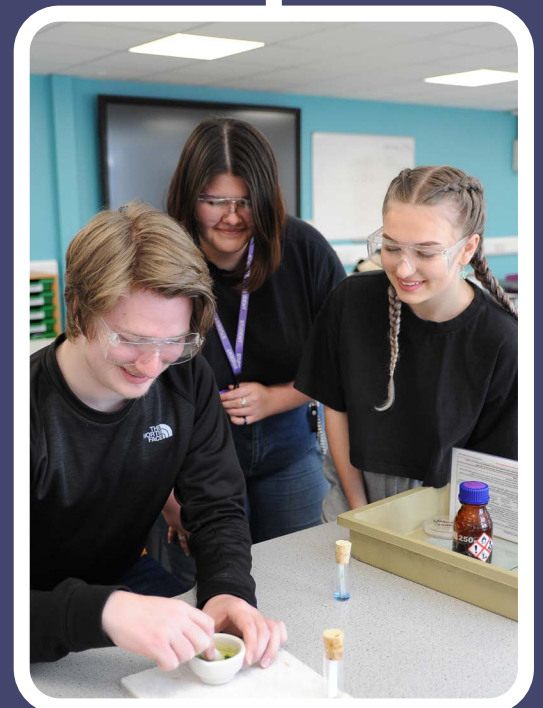
Academy Transformation Trust Further Education (ATTFE) College has a personalised approach towards learning, ensuring that everyone is fully able to achieve their learning goals. We offer a wide range of courses for 16-19 year olds through our Programme of Study for Post 16 Education. We are very proud of our high quality courses and excellent learning facilities. Our students have high pass rates and most go on to further vocational learning, good quality apprenticeships, or employment

Whatever your goal, we are here to help nurture your potential, develop your learning skills and provide you with the tools that you need to successfully achieve your ambitions.

We offer free Careers Education, Information, Advice and Guidance sessions where you can discuss your learning goals and thoughts with experienced and qualified staff members. Our greatest passion is unleashing the potential of individuals to learn new skills that will add value and help improve their overall quality of life. This is supported by ATTFE's Vision, Mission, Values and Ethos.

We look forward to welcoming you onto our courses!

Liz Barrett
Principal, Further Education





Independent Learning

There is a huge emphasis on independent learning at our Academy. You will be expected to organise your own time and actively support your studies by completing additional work outside of the classroom. You may be expected to research a topic and to present it to a small group of students, a skill that is vital in work and university life. All Post-16 students will also have a personal tutor. The tutor will register their form and mentor each student for a one-to-one session of around 20 minutes on a regular basis. We have systems in place for monitoring and checking every student's progress to ensure that everyone reaches their full potential.

Work Experience

Every Sixth Former is expected to complete some work experience throughout the year as this provides an abundance of experience and skills which are invaluable for applying for higher education or moving into a full time job.

Our Facilities

We're committed to the continuous improvement of our Post 16 provision; as part of this, we're planning updates to our facilities to help us better support our students throughout their time with us. We have a dedicated Sixth Form area, with spaces for students to complete independent study uninterrupted.

Homework Policy

We expect our students to take a forward-thinking approach to homework. Additional work is set to help students develop their subject knowledge and the key independent learning skills that they will need as they progress into higher education or their careers. Homework also helps us to track your progress and keep you on target.

Sixth Form Ambassadors

Within our Sixth Form, two students from Years 12 and 13 will be voted in as the Sixth Form Ambassadors. Part of their role will be to assist the Sixth Form pastoral team and deliver Sixth Form (and occasional lower school) Year Meetings. These posts are very coveted and the students who undertake them are expected to represent the academy at various events; this accolade is excellent on application forms for employment, college or university. Students also form a committee who are responsible for the social activities that take part in the Sixth Form, such as the May Ball.

Why Choose to Study With SCA⁶?



“The teaching and support students receive enable them to achieve well so they are well prepared for their next stage of life.”

-Ofsted

Achievement for All

At Sutton Community Academy, we value the talent, ability and achievement of every one of our students. We strive to provide the best learning environment possible in our Sixth Form, so all our students are equipped with the knowledge, skills and experience they need as they transition into adulthood. We aim to develop our students into respectful, resilient and self-reflective individuals.

Pastoral Care

At Sutton Community Academy, we believe that the way in which we nurture and care for our students is intrinsic to their success. We have a pastoral support team led by highly trained Leaders of Learning and Achievement in each year group. Our pastoral strategy aims to create an environment where students feel warmly supported and valued, and personal strengths are developed by praise and encouragement, not pressure. We maintain strong links with professional partners and support services, ensuring these are always available to students as needed.

Special Educational Needs and Disabilities

We are committed to providing high quality education and support to students with SEND. Our provision aims to supply everything students need to succeed, including high quality teaching, specialist materials and equipment, and a broad and balanced curriculum. As an academy, we make every effort to be truly inclusive. We welcome everybody into our community and aim to support every child to reach their full potential. Further details on our local SEND offer can be found on our website.

“Curriculum is broad and ambitious in all subjects and for all pupils, and focuses precisely on what subject knowledge pupils need to know”

-OFSTED



Course Information

- 10** Art & Design
- 11** Biology
- 12** Business Studies
- 13** Catering
- 14** Chemistry
- 15** English Literature
- 16** French
- 17** Geography
- 18** Health & Social Care
- 19** History
- 20** IT
- 21** Maths
- 22** Media Studies
- 23** Music
- 24** Photography
- 25** Performing Arts
- 26** Physics
- 27** Psychology
- 28** Sociology
- 29** Sports

Information on ATTFE College courses begins on **Page 30**.

Art & Design

Entry Qualifications:

5 GCSEs, including English and maths, grade 5/C or above. GCSE Art and Design Grade 6, or demonstrable subject interest and skill.

Course Content:

Can include:

- Exploration of various artistic media, including traditional 2D, 3D and digital creative mediums.
- In-depth study of the creative practice of historical and contemporary artists.
- Introduction to new artistic processes, such as printmaking and photography.
- Trips to art galleries and life-drawing workshops.
- Independent working on your personal project in our bespoke A-Level studio.

Subject and Career Links

Art and Design can help in a variety of careers, such as journalism, film and animation, game and web design, or graphic communication and marketing.

Qualification: A Level
Exam Board: OCR



About this Course

Art, in all of its forms, inspires creativity, stirs emotion, sparks debate and reflects society. On the OCR Art and Design A-Level, you can express your own creative flair within your specialisation through a broad based art, craft and design specification including drawing, painting, sculpture, photography, graphic design, textiles, illustration or printmaking. The programme will cover a wide variety of media, allowing you the opportunity to flex your creative muscles while learning new techniques and approaches, producing creative, dynamic and exciting outcomes, inspiring and challenging.

Method of Assessment

This course is assessed by a combination of practical and portfolio work, comprising:

Component 1: Personal Investigation (60%)

Component 2: Externally Set Assignment- a supervised 15 hour practical assessment (40%)

For more information, please speak to:
Miss Newcombe, Head of Art

sarah.newcombe@attrust.org.uk

Qualification: A Level
Exam Board: Edexcel

About this Course



Understanding biology is the key to understanding the development of life. Finding cures for diseases, tackling environmental issues and solving crimes through forensics are just some of the important roles a biologist can play in society. Topical issues such as disease, genetic engineering, DNA structure and the environment are all covered in Edexcel A-Level biology. You can expect to develop a wealth of knowledge on cells, organs, the treatment of diseases and human evolution—just a small sample of the areas covered.

Method of Assessment

This course is assessed by three examinations and an observed practical task.

Paper 1: Natural Environments & Species Survival

Paper 2: Energy, Exercise and Co-ordination

Paper 3: General & Practical Applications

**For more information, please speak to:
Mr Cruxon, Head of Science**

robert.cruxon@attrust.org.uk

Biology

Entry Qualifications:

5 GCSEs, including English and maths, grade 5/C or above. GCSE Science Grade 6 or above.

Course Content:

Can include:

- Learning around a wide variety of topics over eight modules entitled Lifestyle, Health and Risk; Genes and Health; Voice of the Genome; Biodiversity and Natural Resources; On the Wild Side; Immunity, Infection and Forensics; Run for your Life; Grey Matter.
- Opportunity to participate in a minimum of twelve practical tasks in addition to theoretical learning.

Subject and Career Links

The Edexcel A-Level in biology is a highly regarded qualification that can lead to further study for a degree in medicine, nursing, veterinary science and animal care at university. Careers in medical professions such as dentistry or physiotherapy are also accessible to biology students, as is work in the environmental and pharmaceutical research fields.

Business Studies

Entry Qualifications:

5 GCSEs, including English and maths, grade 5/C or above. Demonstrable interest in business. GCSE Business is not required for this course.

Course Content:

Can include:

- Exploring business concepts and their real-life applications.
- Understanding how marketing campaigns are developed.
- Learning about personal and business related finance.
- Understanding the organisation and management of business events.

Subject and Career Links

The qualification carries UCAS points and can contribute to meeting admission requirements for many relevant courses, alongside other Level 3 qualifications as part of a programme of learning. Depending on the other qualifications students have achieved, they can progress to a degree programme from a range of programmes in the business sector. Progression can be direct to an honours degree or to a Higher National, Foundation Degree, or Higher Apprenticeship.

Qualification: Vocational | Exam Board: Pearson



About this Course

The extended certificate in business studies is designed for young people who are interested in learning about the business sector alongside other fields of study, with a view to progressing to a wide range of higher education courses, not necessarily in business-related subjects. It is designed to be taken as part of a programme of study that includes other appropriate BTEC Nationals or A Levels.

Method of Assessment

This diploma is equivalent in size to one A-Level. The course comprises of four units, of which two are external exams; these comprise 58% of your grade.

Component 1 & 2: Internal Coursework

Component 3 & 4: External Examinations

**For more information, please speak to:
Mr Carlin, Teacher of Business Studies**

richard.carlin@attrust.org.uk

About this Course



This course is ideal for students who enjoy cooking, have a passion and interest in food, and want to develop their practical skills while experimenting with new foods. This practical element is supported by a strong base of learning around nutritional science and health and safety, allowing students to develop key transferable skills that will support a career in the catering and hospitality industry.

Method of Assessment

This course is assessed by a combination of external assessment, independent research projects and a practical food showcase.

**For more information, please speak to:
Mrs Honeyman-Smith, Head of Food**

rosie.honeyman-smith@attrust.org.uk

Catering

Entry Qualifications:

5 GCSEs, including English and maths, grade 5/C or above. GCSE Food and Nutrition or a pass grade in Level 2.

Course Content:

Can include:

- Practical-based learning in addition to theoretical work around nutritional science and food safety.
- Three units titled Meeting the Nutritional Needs of Specific Groups; Ensuring Food is Safe to Eat; Experimenting to Solve Food Production OR Current Issues in Food Science and Nutrition.

Subject and Career Links

The food industry is one of the largest employers in the UK. There are many global opportunities in hotels and restaurants, or as nutritionists, sports coaches, fitness instructors and care providers. You could be employed in a food manufacturers or government agencies, developing menus and food products.

Chemistry

Entry Qualifications:

5 GCSEs, including English and maths, grade 5/C or above. GCSE Science Grade 6 or above.

Course Content:

Can include:

- Developing your knowledge of chemical processes through a good mixture of both practical and theory based work.
- Study of physical and organic chemistry, thermodynamics, atomic structure and experimental investigations.
- Learning about three core areas of chemistry; physical chemistry, organic chemistry and inorganic chemistry.
- Building on topics covered at Level 2.

Subject and Career Links

The chemistry A-Level can lead on to degree courses and further study of chemistry, biochemistry, chemical engineering, medicine, dentistry, veterinary science, pharmacy, pharmacology, food science, nursing and physiotherapy. A-Level chemistry is highly recommended for biology, forensic science, geology and various environmental science courses, and beneficial to all university applications.

Qualification: A Level
Exam Board: OCR



About this Course

Chemistry has a huge impact on all of our lives; this course links chemical theory to real life applications. From the development of new medicines and consumer goods to how we control levels of pollution, the study of chemistry plays an exciting and important role in the modern age and the future.

Method of Assessment

This course is assessed by three examinations and a practical assessment.

Paper 1: Periodic Table & Physical Chemistry

Paper 2: Synthesis & Analytical Elements

Paper 3: Unified Chemistry

**For more information, please speak to:
Mr Cruxon, Head of Science**

robert.cruxon@attrust.org.uk

Qualification: A Level
Exam Board: AQA

About this Course



English Literature allows students to access a wide range of literature from various points in history. Students will learn how language has changed and debate how key issues and themes are presented through novels, plays and poetry, whilst developing critical analysis. The engaging texts allow students to debate and analyse the key themes and ideas within them, considering a range of perspectives from feminism to Marxism. The coursework element allows students to select their own text to study and offers the option to recreate a piece of literature in the style of the author.

Method of Assessment

Students are assessed with two examinations alongside two pieces of coursework.

Paper 1: Tragedy in Literature

Paper 2: Social and Political Protest in Writing

For more information, please speak to:
Mrs Paulson, Head of English

anna.paulson@attrust.org.uk

English Literature

Entry Qualifications:

5 GCSEs, including English and maths, grade 5/C or above.

Course Content:

Can include:

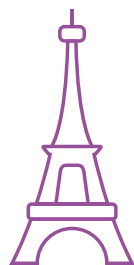
- Study around the theme of tragedy in historical literature.
- Texts including *Othello* by William Shakespeare, *Death of a Salesman* by Arthur Miller and *A Collection of Poems* by John Keats.
- Study of political and social protest in historical and contemporary literature.
- Texts including *The Kite Runner* by Khaled Hosseini, *The Handmaid's Tale* by Margaret Atwood, the poetry of William Blake and *A Doll's House* by Henrik Ibsen.
- Learning about a range of critical approaches, including feminist, Marxist, eco-critical and the literary canon.

Subject and Career Links

English Literature is a good choice for students who are considering studying any language, literary and linguistic qualifications at University level. It teaches students critical and analytical skills which are useful in many disciplines, such as journalism, copywriting and consultancy.

French

Qualification: A Level | Exam Board: AQA



About this Course

Entry Qualifications:

5 GCSEs, including English and maths, grade 5/C or above. GCSE French at grade 5 or above, or equivalent skill.

Course Content:

Can include:

- Focus on the shaping of French society, both socially and culturally.
- Learning language around key areas including social issues and trends; political and artistic culture; films and literary texts.
- Practical discussions and debates in French regarding the topics studied.

Subject and Career Links

A level French is beneficial for any career, opening up the same career pathways in all French-speaking countries. Students could continue their studies at university, work in the travel and tourism industry, interpret or translate as a freelancer or as part of a larger business, or seek work in international business management, marketing, finance, banking and accounting, or education. Learning a language is seen as an intellectual skill which many universities and employers desire when recruiting candidates.

Through studying A-level French, you will gain a deeper understanding of vocabulary, grammar, culture, and linguistic skills that extend beyond the content covered at GCSE. By continuing your language learning journey, you will see many benefits both personally and academically, including areas such as improved memory, communication, and problem-solving skills, alongside increased access to literature, media and music from all of the twenty-nine Francophone countries. Furthermore, studying A-level French will support you in having increased access to travel and work opportunities both during your study and in the future.

Method of Assessment

Students complete three assessments designed to test all aspects of their technical knowledge of the French language.

Assessment 1: Listening, Reading & Writing

Assessment 2: Writing

Assessment 3: Speaking

For more information, please speak to:

Ms. Jugg, Head of Languages

lauren.jugg@attrust.org.uk

About this Course



“Geography is the key to our future”

- Michael Palin

Geography is a subject covering a whole host of fundamental issues such as climate change, migration and natural hazards. Alongside the academic accolades, Geography also provides students with the enquiry and research skills sought after in many areas of the workplace, further statistical analysis skills and a deeper understanding of the world around us.

Method of Assessment

The course is assessed by a fieldwork assignment and two examinations, each 2.5 hours long.

Exams: Physical & Human Geography (80%)

Fieldwork: 4000 Word Investigation (20%)

For more information, please speak to:
Mrs. Vincent, Head of Humanities

emma.vincent@attrust.org.uk

Geography

Entry Qualifications:

5 GCSEs, including English and maths, grade 5/C or above. GCSE Geography at grade 5 or above, or keen interest.

Course Content:

Can include:

- **Physical Geography:** hazards, water cycle, carbon cycle, coastal systems and landscapes.
- **Human Geography:** global systems and governance, changing places, population and the environment.
- **Fieldwork:** exploration of local geography.

Subject and Career Links

Geography is a subject that opens up many doors through its enquiry-based skills. Students may go on to study geography, environmental science, geology, paleontology, volcanology or numerous other related sciences at university. Due to the key skills that students develop, this subject may open doors to work in governance at differing levels, any form of environmental work, planning, meteorology or working with charities.

Health & Social Care

Entry Qualifications:

5 GCSEs, including English and maths, grade 5/C or above.

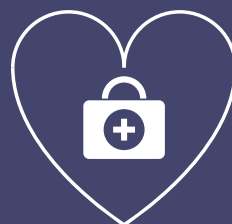
Course Content:

- **Unit 1:** Human Lifespan Development.
- **Unit 5:** Meeting Individual Care and Support Needs.
- **Unit 2:** Working in Health and Social Care.
- **Unit 12:** Supporting Individuals with Additional Needs.
- Developing skills in problem solving, critical thinking and applying creative solutions.
- Practical experience with interpersonal skills such as communication, self-management and adaptability.

Subject and Career Links

This course will enable learners to progress to a degree programme chosen from a range of programmes in the health and social care sector. The qualification carries UCAS points and is recognised by higher education institutions as contributing to meeting admission requirements to many relevant courses.

Qualification: Vocational
Exam Board: Pearson



About this Course

This qualification aims to provide an introduction to study of the sector and is for students interested in learning about the health and social care sector as part of a balanced study programme. It is intended as an Applied General qualification, supporting access to a range of higher education courses, possibly in the health and social care sector.

Method of Assessment

This two year course is assessed by a combination of practical and portfolio work, comprising:

Units 1 and 2: External Examination
Units 5 and 12: Internal Coursework
(externally verified)

For more information, please speak to:
Mrs Dymond, Teacher of Health and Social Care

marie.dymond@attrust.org.uk

Qualification: A Level
Exam Board: OCR

About this Course



"History is to society as memory is to the individual"

- Arthur Marwick, Historian

At SCA, we believe this explains the importance of history today. We encourage students to study a wide range of historical time periods to develop a sense of the importance of history and how it has impacted every part of the world.

Method of Assessment

This course is assessed by three examinations and a controlled 4000 word assessment on a topic of the student's choice.

Paper 1: British Period Study (25%)

Paper 2: Non-British Period Study (15%)

Paper 3: Thematic Study & Historical Interpretation (40%)

**For more information, please speak to:
Mr Hutchinson, Head of History**

simon.hutchinson@attrust.org.uk

History

Entry Qualifications:

5 GCSEs, including English and maths, grade 5/C or above. Grade 5 in GCSE History.

Course Content:

Can include:

- Study of a wide range of periods of history, including Germany 1919-1963, Early Tudors 1485-1558, Russia 1855-1964 and America between the two World Wars.
- Focus on developing writing, communication and analytical skills.
- Exclusive opportunity for two students to visit Auschwitz-Birkenau in Poland.
- Lectures and seminars presented by subject experts to help broaden historical knowledge and develop exam skills.

Subject and Career Links

Studying History can lead to a number of excellent careers in diverse areas of society such as the media, government, heritage organisations, teaching, archives, museums and galleries, the police and law.

Entry Qualifications:

5 GCSEs, including English and maths, grade 5/C or above. GCSE IT is not required for this subject.

Course Content:

Can include:

- Insight into the IT sector, investigating technological change, infrastructure, global information exchange as well as legal and security considerations.
- Studying cyber security, considering data protection and emerging threats such as cyber terrorism.
- Development of transferable skills such as communication and problem solving, time management, research and analytical skills.

Subject and Career Links

Achievement in this qualification can support progression to study relevant IT degrees in a Higher Education institution, such as Computing and IT; Computer Science; Software Development; Software Engineering; IT and Computer Networks; Business Information Systems.



About this Course

Our Level 3 Cambridge Technical in IT qualification helps students to achieve their potential and progress to the next stage of their lives, whether that involves higher education, an apprenticeship or employment. IT is an exciting subject due to the constantly changing speed of technological developments within industry; IT skills are considered to be key skills for life in the 21st century. This qualification is designed for students who want to continue their education by developing their knowledge and understanding of the principles of IT, global information systems, computer networks and cyber security.

Method of Assessment

Exam 1: Fundamentals of IT

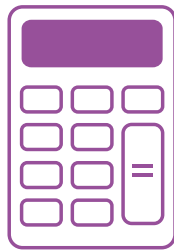
Exam 2: Global Information

Coursework: Four Optional Units

**For more information, please speak to:
Mr Taylor, Head of IT**

lewis.taylor@attrust.org.uk

About this Course



Studying mathematics gives us the power to discover and identify essential practical information in our day-to-day lives. For example, it allows us to measure things such as distance and speed, and to build anything from a website to a skyscraper. Studying mathematics at A-Level will give you a varied skillset that will be indispensable for a variety of tasks.

Method of Assessment

Students are assessed by three examinations. Each paper offers 100 marks and has a duration of two hours.

Paper 1: Pure Mathematics (33%)

Paper 2: Mechanics (33%)

Paper 3: Statistics (33%)

**For more information, please speak to:
Mrs Smalley, Head of Maths**

lesley.smalley@attrust.org.uk

Entry Qualifications:

5 GCSEs, including English and maths, grade 5/C or above.

Course Content:

Can include:

- **Pure Mathematics:** methods and techniques underpinning all other areas of maths, including proof, algebra, trigonometry, calculus and vectors.
- **Mechanics:** maths used to study the physical world, modelling the movement of objects and the changing forces acting upon them.
- **Statistics:** sampling, data presentation and probability, studying statistical distributions with special properties, such as bionials.

Subject and Career Links

Mathematics is a great A-Level in itself as it assists in the development of skills and techniques to allow you to see so how the world works through the language of mathematics. This A-Level is also considered a facilitator qualification within many universities, with links to other degrees such as chemistry and engineering.

Media Studies

Entry Qualifications:

5 GCSEs, including English and maths, grade 5/C or above. GCSE Media, or demonstrable subject interest.

Course Content:

Can include:

- Analysis of audio-visual media 'texts'.
- Study of texts including the film **Black Panther**, Beyonce's *Formation* music video, and magazines like *The Big Issue*.
- Coursework project for students to create their own media product.

Subject and Career Links

Careers in film, radio and television, gaming and online media are all possible options for students of media. Employment could include journalism, games or web design and promotion, TV presenting, film production and broadcasting, as well as a host of other varied and interesting opportunities. Students can opt to study media at many universities, or gain access to other courses that link in with the areas covered in the A-Level- including film studies, graphic design, sociology and public relations.

Qualification: A Level
Exam Board: Eduqas



About this Course

In the media-dominated world of the 21st Century, wars are won and lost on social media, celebrities seem more familiar to us than real life friends and our identities mirror popular figures from the internet, music and fashion. In Media Studies A-Level, students will engage with and analyse the various forms of media that we consume every day. They will develop the ability to deconstruct advertising, film, television, radio, computer games, online media (including social media), and newspapers and magazines. They will also research and produce their own media product.

Method of Assessment

This two year course is assessed by a combination of practical and portfolio work, comprising:

Component 1: External Exam (35%)

Component 2: External Exam (35%)

Component 3: Controlled Assessment (30%)

**For more information, please speak to:
Mrs Finn, Teacher of Media Studies**

angela.finn@attrust.org.uk

Qualification: BTEC
Exam Board: Pearson

About this Course



This course is designed to provide students with a performance-based approach to music education. It consists of mainly practical work, with both solo and ensemble elements. Students also develop their understanding of music theory and learn to recognise and perform various genres of music, with a range of instruments available.

Method of Assessment

This course is assessed by practical and written assessments over 4 units; 2 are internally assessed and 2 are external exams.

For more information, please speak to:
Mrs Richardson, Head of Music

jennifer.richardson@attrust.org.uk

Music

Entry Qualifications:

5 GCSEs, including English and maths, grade 5/C or above. GCSE Music or demonstrable subject interest and skill.

Course Content:

Can include:

- Practical elements, with the opportunity to record music in our studio.
- 4 coursework modules, which includes 3 mandatory and one optional unit that can be chosen from 4 options.
- Opportunities to perform music to various audiences.
- Solo and ensemble elements.
- Practical and theory based work.

Subject and Career Links

There are many careers in the music and performing arts world which rely on an understanding of or skills in music production including technical theatre, recording studios, multimedia, film and TV, games production, and of course, a career as a musician. It is also a good basis for further study, whether at diploma or degree level.

Photography

Qualification: A Level

| Exam Board: OCR

Entry Qualifications:

5 GCSEs, including English and maths, grade 5/C or above. GCSE Photography, Art or demonstrable interest (for example, a portfolio of work).

Course Content:

Can include:

- **Component 1:** a sustained project evidencing the journey from initial engagement to the development and realisation of a final piece.
- A supporting 1000 word written essay linking to the themes of your practical project.
- **Component 2:** a response to a chosen stimulus, developing a series of investigations in preparation for a final piece.

Subject and Career Links

This course unlocks opportunities and pathways in the following careers: photo journalism, graphic design, product design, wedding photography, brand marketing, advertisement, film/video editing, press photography, magazine feature design, commercial photography, (sports, fashion, etc).



About this Course

A- Level Photography focuses on digital based photographic mediums; students learn to use a DSLR camera, develop understanding of post-production and master the art of capturing images in full manual mode. You will learn fundamental skills to enable you to master the core principles of photography, including aperture, shutter speed, ISO, depths of field, composition, studio lighting, Photoshop processing and more. Students will be expected to work independently to develop a theme/concept, create a personal portfolio and specialise in an area of their choice.

Method of Assessment

Students will complete a sustained practical project and an externally set task (examination), both of which are marked internally and moderated externally.

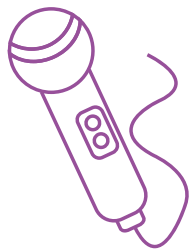
Component 1: Personal Investigation (60%)

Component 2: Externally Set Task (40%)

**For more information, please speak to:
Mr. Fowler, Teacher of Photography**

jordan.fowler@attrust.org.uk

About this Course



This qualification is designed for learners with a keen interest in performing arts. It gives a broad introduction to the performing arts sector with an emphasis on core knowledge and fundamental skills which are transferable across other sectors- including communication, presentation, physical and creative skills.

Method of Assessment

This course is assessed by two external and two internal assessments.

**For more information, please speak to:
Mrs. Lupton, Head of Performing Arts**

aimee.lupton@attrust.org.uk

Performing Arts

Entry Qualifications:

5 GCSEs, including English and maths, grade 5/C or above. Demonstrable subject interest and skill. Level 2 Performing Arts is also an advantage.

Course Content:

Can include:

- Gaining and applying knowledge of key performing arts practitioners.
- Practical workshops exploring the skills and techniques, psychomotor and emotive skills of performers.
- Optional unit on a wide range of potential topics such as improvisation, variety performance or classical dance styles.

Subject and Career Links

In addition to the performing arts sector-specific content, this course provides learners with the opportunity to develop all-round performance skills and transferable skills such as self-confidence, self-presentation, personal discipline, time management and organisational skills which are highly regarded by higher education and employers.

Physics

Entry Qualifications:

5 GCSEs, including English and maths, grade 5/C or above. GCSE Science Grade 6 or above.

Course Content:

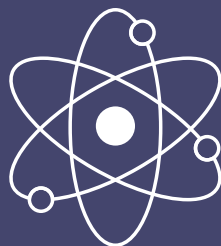
Can include:

- Building knowledge of the laws of physics, applying understanding to solve problems on topics ranging from subatomic particles to the entire universe.
- Opportunities to develop relevant practical skills.
- Content comprising of six modules; Development of Practical Skills in Physics; Foundations in Physics; Forces & Motion; Electrons, Waves & Photons; Newtonian World & Astrophysics; Particles & Medical Physics.

Subject and Career Links

Physics students are equipped with skills and knowledge that can transfer to a range of varied careers, such as engineering, medicine, forensics, sports science, geophysics, aeronautics, nanotechnology, research or teaching. If you intend to continue studying at university level, the Physics A-Level can lead on to a range of degree courses such as photonics, engineering, information technology, and

Qualification: A Level
Exam Board: OCR



About this Course

Physics is a fundamental science subject and is the key to understanding the world around us and the world beyond us. It's the study of matter, energy, force and motion, which can challenge our imagination and has led to world-changing discoveries such as lasers and computers. Our science department has combined experience of teaching physics of over 23 years; one of our teachers holds a doctorate in Physics.

Method of Assessment

This course is assessed by a series of three written examinations. There is no practical assessment for this qualification.

Paper 1: Modelling Physics (37%)

Paper 2: Exploring Physics (37%)

Paper 3: Unified Physics (26%)

**For more information, please speak to:
Mr. Cruxon, Head of Science**

robert.cruxon@attrust.org.uk

Qualification: A Level
Exam Board: AQA

About this Course



Ever wondered if prison really does change criminal behaviour? Or why some people conform? Or perhaps if the experiences you had before the age of five really do shape the person you are today? A-level Psychology will give you an understanding of the way people think and why people behave in certain ways. You will develop a variety of skills including analytical, critical-thinking, research and problem solving.

Method of Assessment

This course is examined at the end of two years, with three exams worth 96 marks each. Successful entrants will earn a traditional A*-E grade.

Exam 1: Multiple Choice (33%)

Exam 2: Short Answer (33%)

Exam 3: Extended Answer (33%)

For more information, please speak to:
Mrs Branson, Teacher of Psychology

sue.branson@attrust.org.uk

Psychology

Entry Qualifications:

5 GCSEs, including English and maths, grade 5/C or above.

Course Content:

Can include:

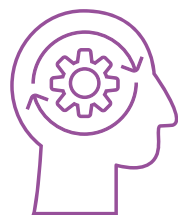
- Introduction to psychological concepts, theories, studies, research methods and ethics.
- Further in-depth investigation of topics like biopsychology and psychopathology.
- Learning how psychology informs human behaviour; investigating basic forensic psychology.

Subject and Career Links

Psychology combines well with forensic science, sociology, law, politics, history, health and social care, business studies and English studies, all of which could be further options at degree level. Career choices could come from the areas of forensic psychology; marketing; business development; accountancy; human resources; occupational therapy; clinical psychology; nursing; teaching.

Sociology

Qualification: A Level | Exam Board: AQA



About this Course

‘Things are not what they seem’

Sociology looks at human behaviour in a range of societal situations and tries to understand it. We look beneath the obvious, exploring different perspectives and asking important questions. What is a family, and how does it function? Why do people experience violence and abuse, and what happens when they do? How do our society, state and individual identities influence the way we live?

Method of Assessment

This course is assessed by external examinations.

AS Level: Two exams, 1 hr 30 mins each

A Level: Three exams, 2 hrs each

**For more information, please speak to:
Mrs Runnalls, Teacher of Sociology**

penny.runnalls@attrust.org.uk

Entry Qualifications:

5 GCSEs, including English and maths, grade 5/C or above.

Course Content:

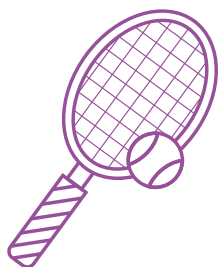
Can include:

- A variety of learning strategies from small group work/team work and presentations to whole class discussions, role play, stimulus work research and games.
- Exploring research methods such as experimentation, observation, questionnaires and interviews, learning how they operate as well as their advantages and disadvantages.
- Study of core sociological concepts, learning about individual identity, the role of the family, the influences of society and the state as well as legal and ethical aspects.

Subject and Career Links

Sociology provides a strong basis for further general and specific studies. Many professional careers require understanding human behaviour and a greater appreciation of people, their relationships and lives. Such study will be of great value to anyone looking to pursue a career working with people in fields such as the law, nursing, policing, teaching, management, social work, journalism, prison and probation, criminology and human resources.

About this Course



The Cambridge Technical in Sport and Physical Activity enables students to develop and apply knowledge of sports-related activities. Students participate in practical activities alongside exploring body systems and the effect of physical activity, sports activity leadership and sports organisation and development. The course will involve visits to the likes of Loughborough University to inspire students and prepare them for a career in sport. We also plan to provide the opportunity for an overseas visit to inspire and educate students in the vast opportunities that are accessible to them in the wider world of sport.

Method of Assessment

The course is composed of five units. Four are assessed through coursework, while the fifth (Body Systems & Effects of Physical Activity) includes an exam.

Component 1: Internal Coursework (80%)

Component 2: Examination (20%)

For more information, please speak to:

Mr. Jones, Head of PE

brett.jones@attrust.org.uk

Entry Qualifications:

5 GCSEs, including English and maths, grade 5/C or above. GCSE Sport or demonstrable interest and ability.

Course Content:

Can include:

- Developing practical sports skills.
- Learning about body systems and the effects of physical activity.
- Practical experience in sports coaching and activity leadership.
- Processes of sports organisation and development.
- Safe working in sports, exercise, health and leisure.
- Gaining the Level 2 Sports Leaders qualification.

Subject and Career Links

Studying sport can lead to a range of employment prospects; PE teaching, health and fitness industry roles, physiotherapy, sports therapy, sports injury clinic support, sports development, sports management, coaching, video analysis and more. Sports A-Level also opens up options to study at UK or international Universities, or apply knowledge to an apprenticeship or career in sport.

College Life

Why study at ATT Further Education College?

We provide a competitive 16-19 provision, with impressive facilities and a wide range of courses. Read on to find out more about life at ATT Further Education College.

Careers Programme

As a learner with ATTFE College you will take part in sessions to help you develop a wide range of key employability skills alongside your understanding of the world of work. You will also take part in a variety of different events and activities to develop your understanding of working within the industry for which you are training. These may include group activities or visits to workplaces and workshops with industry instructors.

During your time studying at ATTFE College, you will have the opportunity to attend one-to-one personal guidance appointments with a careers adviser. The adviser will help you plan and prepare for your next steps, whether you are looking to progress on to the next level of qualification, either with us

or elsewhere, or if you are planning to move into employment.

Our Facilities

We deliver our 16-19 courses across three sites: Dukeries Academy in Ollerton, our college of Vehicle Technology in Retford, and Sutton Community Academy here in Sutton-in-Ashfield. We have specialist facilities for our Construction and Hair & Beauty provision at our Ollerton campus, and our Retford campus is a working mechanics garage.

To support you in accessing the course that is of most interest to you, we offer a free minibuss service! The minibuss operates daily between the three campuses, meaning you can study the course you are most interested in, no matter where you live!

Finance & Bursaries

If you are aged 16-19 and study a course with ATTFE College you may be eligible for a bursary! A bursary is an amount of money that doesn't have to be paid back. Its aim is to help you pay for things you need to complete your course, including specialist clothing, books and other equipment you need, transport to college, and lunch on the days you study.

Enrichment

Throughout the year we run various activities as part of our Personal Development programme. You will have the opportunity to take part in a range of visits and trips to different places. These may include industry specific workplaces and events, as well as other events such as our Skills Show. You'll also take part in different sessions and activities to develop your personal skills and help you to build a detailed understanding of our society and the wider world in which we live.

Although your various enrichment activities do not lead to a formal qualification, they are a compulsory and important part of your course that will allow you to develop vital skills and knowledge needed for life, all whilst having a bit of fun too!



Course Guide

Our Courses

Our courses aim to provide a wide range of practical, business and general life skills to our learners. Many of our courses offer practical modules and work experience opportunities, allowing us to help prepare you to progress into a career in your chosen field.

In each area of study, we offer a range of courses at different levels of difficulty and experience; some also allow learners to choose an area of focus within the broader field. If you're not sure which courses are right for you, speak to your teacher or careers advisor. If you'd like further information on our qualifications, you can visit our website or send an email to college.info@attfe.org.uk.

- 32 Access to Higher Education**
2 Courses Available
- 33 Business Administration**
2 Courses Available
- 34 Construction and Building Services**
4 Courses Available
- 35 Employability Skills**
11 Courses Available
- 36 Engineering and Technology**
4 Courses Available
- 37 Hair and Beauty**
7 Courses Available
- 38 Health and Social Care**
3 Courses Available
- 39 Performing Arts**
2 Courses Available
- 40 Sports Coaching**
1 course Available
- 41 Supporting Teaching and Learning**
3 Courses Available
- 45 Travel and Tourism**
2 Courses Available
- 46 Uniformed Public Services**
3 Courses Available
- 47 Working with Children**
3 Courses Available

Access to Higher Education

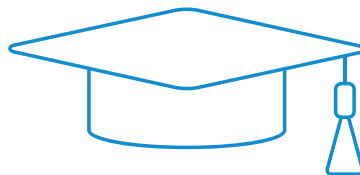
Qualifications Available:

- **Level 2 Aim Award**
Pre-access to HE Diploma
Health Professions
- **Level 3 Aim Award**
Access to HE Diploma
Health Professions

About These Qualifications:

If you want to work in the world of nursing, midwifery or social science our career-focused courses will help you reach your goals. An Access to a Higher Education Diploma (Level 3) is the equivalent of 3 A Levels, and rather than spend years working towards your qualification, you can obtain your Diploma in 12 months.

The Pre-Access (Level 2) course is ideal if you would like to enter the Access to Higher Education course but haven't got the necessary GCSE grades.



About this Course

Our Access to HE Diplomas give you the opportunity to apply for a degree in a health profession, such as Podiatry, Operating Department Practice (ODP), Occupational Therapy (OT), Dental Science and Speech and Language Therapy. This can lead to a career working in the NHS, private practice, the community, or research.

The Level 2 course gives learners the opportunity to build the essential skills and qualifications needed to progress to any of our Access to HE courses. The course comprises core modules in biology, sociology, psychology and study skills, as well as GCSEs in English and maths. The range of work undertaken throughout the course ensures learners develop both academic and study skills and is designed to help applicants build a solid learning foundation in a welcoming and supportive environment. We want to help you to develop your subject knowledge and academic skills, but also to build new relationships, confidence and self-esteem.

This course is assessed by a combination of written assignments and portfolio work.

These courses support future pathways following a higher education route. Not all careers need a degree however, and an Access to HE Diploma in Health Professions or Science is also an excellent way to maximise your job prospects in roles such as clinical support staff as well as therapy related or advocacy professions.

About this Course



At Level 2:

You will learn the basics of what it is like to work in a business environment. This involves a combination of classroom study and practical work-based experience. You cover a range of topics relating to the sector such as customer service, digital literacy and communication skills.

At Level 3:

Learners complete mandatory units in communicating in business environments; managing personal and professional development; the principles of business; principles of administration; principles of business information. Learners then choose from a range of more specialised contextualised units that align to the duties of their role, including contributing to the improvement of business performance; delivering a presentation; managing an office facility; monitoring information systems; participating in a project; managing individuals' development in the workplace; principles of leadership and management; chairing and leading meetings.

This course is assessed through a portfolio of evidence and observation of practice in a work environment.

These courses support the development of transferable skills that would be beneficial to further study in similar subjects. Those who complete the Level 3 Diploma could choose to progress to Level 4 in Business Administration or develop their knowledge further by studying Business Management at Level 3. Ultimately, all courses support employment prospects in Business Administration roles.

Business Administration & Customer Services

Qualifications Available:

- **Level 2 Diploma**
Aim Qualifications
Skills for Working in Business Administration and Customer Service Industries
- **Level 3 Diploma**
Pearson BTEC
Business Administration

About These Qualifications:

The AIM Qualification provides learners with opportunities to develop their skills and knowledge around building a career in a range of business administration and customer service industries. Developed in conjunction with employers, training providers and subject matter experts, this suite of qualifications truly reflects the knowledge, skills and understanding which individuals require when employed in either a business administration or customer service role.

The Pearson BTEC allows learners to demonstrate a practiced set of skills in business administrative operations, including developing and managing administrative systems, processes and functions. It develops learners' understanding of administrative environments, the principles of business and the broader, cross-organisational processes that an administrator must understand.

Construction & Building Services

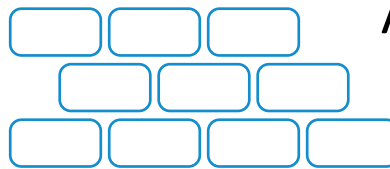
Qualifications Available:

- **Level 2 NOCN Diploma**
Property Maintenance Operations
- **Level 2/3 NOCN Diploma**
Bricklaying Construction
- **Level 2/3 NOCN Diploma**
Site Carpentry Construction
- **Level 2/3 NOCN Diploma**
Painting and Decorating

About These Qualifications:

These qualifications focus on helping learners to develop practical workplace skills in their specific subject area, with the ultimate aim of pursuing a career in the trade of their choice.

Though the teaching will be practical and skills based, there will be theory elements to support the practical work. Learners will develop specialised skills that will facilitate their transition into the workplace, with the potential to progress to management and overseer roles.



About this Course

Property Maintenance Operations

Learners explore the mechanisms of buildings including electrical, plumbing, plant, safety systems and equipment. They learn how to provide first and immediate response to fault finding, ensuring the prevention of major damage and minimising reactive intervention.

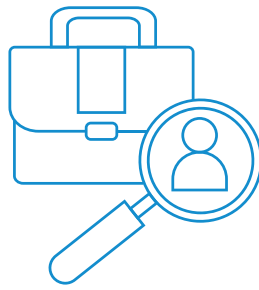
Bricklaying, Site Carpentry & Painting and Decorating

Learners carry out work experience with an external company, allowing them to put their classroom skills into practice. This can help secure an apprenticeship, employment or assist you with your application for university. We recommend that you start thinking about your placement as soon as you have applied for your course, considering which potential employers you may want to undertake the placement with to help you get the most out of the experience.

These courses are assessed by online assessment and a portfolio of evidence detailing practical tasks.

These courses support learners who wish to move into a trade career, either employed or self employed. Learners who complete their courses can look into completing further qualifications at higher levels or moving into further specialised areas, such as plumbing, electrics or facilities management.

About this Course



Learners studying AIMVOC foundation courses will have the opportunity to develop their knowledge of their chosen subject whilst considering how to start their career path into their chosen industry. All courses involve strong practical elements of learning that encourage our learners to increase not only their theoretical studies but their experience in workplace environments.

These courses are all assessed through a portfolio of evidence; some also require an online assessment.

All courses support the development of subject-specific skillsets, allowing learners to progress to higher-level qualifications in their chosen area of study. Alternatively, learners who complete these qualifications gain the skills necessary to move into the workplace and pursue careers in these trades.

Employability Skills

Qualifications Available:

- Animal Care
- Business Administration & Customer Services
- Catering & Hospitality
- Childcare
- Construction & Building
- Creative Design
- Hair & Beauty
- Horticulture
- Digital Technology
- Transport & Logistics
- Working in Health, Lifestyle & Science Industries

About These Qualifications:

These AIMVOC foundation courses are designed to enable learners to access vocational qualifications from Entry Level 1 through to Level 2, depending on their level of learning. They can also complete varying sizes of qualification at each level, from Award through to Diploma. Being able to build up achievement in incremental stages can help support intrinsic motivation for learners, whilst developing character education.

Engineering & Technology

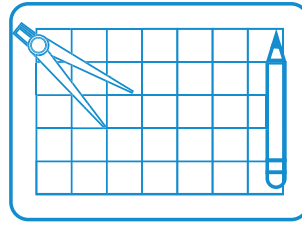
Qualifications Available:

- **IMI Level 1 Certificate**
Transport Maintenance
- **IMI Level 2 Certificate**
Cycle Maintenance & Repair
- **IMI Level 2 Diploma**
Light Vehicle Maintenance & Repair Principles
- **IMI Level 3 Diploma**
Light Vehicle Maintenance & Repair Principles

About These Qualifications:

Our light vehicle qualifications are nationally recognised, vocational and vocationally-related qualifications which allow learners to demonstrate that their knowledge, skills and competence are of the standard required to work in the motor industry. They are designed to help you build and showcase your skill-set within this sector and cover areas such as the inspection, maintenance, repair and servicing of light vehicles.

The L2 qualification is aimed at learners who wish to develop understanding and skills in the building, servicing, repair and maintenance of cycles. This qualification also suits individuals with a keen leisure interest in cycles.



About this Course

The programme of our Vehicle Maintenance courses involve learners studying both the theory and practical aspects of the essential knowledge and skills required by today's motor vehicle repair industry. Learners also gain a broad knowledge and understanding of health and safety in the workplace and other skills associated with working in a garage.

Our Cycle Maintenance course offers learners practical study of all aspects of maintenance and repair, including completing a cycle check, puncture repairs, removal and replacement of gear assembly, rim brake assembly, hub bearings, bottom brackets, cranks and gear systems, building a cycle wheel, preparing frames and forks, augmenting a cycle, changing a cycle frame, and servicing headset assemblies.

These courses are assessed by a combination of written and practical tests, as well as online assessment.

These qualifications have the potential to provide a useful recognition of learners' professional competence, which may aid them in securing jobs and progression in to the vehicle and cycle maintenance industries. They may also provide a stepping stone to further education, potentially at degree level.

About this Course



These courses are ideal for those with an interest in the areas of hair and beauty, who are looking to develop their practical skills, knowledge and techniques.

Learners will have the chance to work in our bespoke hair salon and beauty therapy rooms. We offer our services to the general public, giving you the opportunity to experience a genuine work environment. Here you will practice all elements of your course under the supervision of our fully trained tutors.

These courses are all assessed through a learner portfolio evidencing your practical work, in addition to online assessment.

Our lower level courses can support learners with little or no experience in developing their knowledge and practical skills. From there, they will be able to progress to our higher level qualifications. Learners who complete a Level 3 qualification can consider further studies, apprenticeships or employment in the beauty therapy industry.

Hair & Beauty

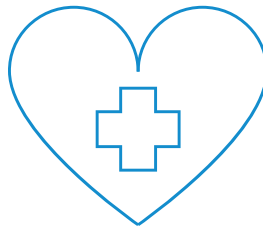
Qualifications Available:

- **Aim Level 1**
Hair and Beauty
- **Aim Level 2**
Beauty Route
- **Aim E3**
Hair & Beauty
- **City & Guilds Level 2**
Hair Route
- **City & Guilds Level 2 Diploma**
Nail Techniques
- **City & Guilds Level 3**
Hair Route
- **City & Guilds Level 3 NVQ**
Nails

About These Qualifications:

Our certificates and diplomas are designed to build on your interest and passion for the hair and beauty industry, covering a wide range of skills from styling, plaiting and twisting to make-up or nail art. We offer a range of courses at various levels to suit learners at all stages of study. Lower level courses will prepare learners for higher level study, from which they can move on to apprenticeships or the workplace.

Health & Social Care



About this Course

Qualifications Available:

- **NCFE CACHE Level 1 Diploma**
Introduction to Health & Social Care and Children & Young People's Settings
- **NCFE CACHE Level 2 Certificate**
Children and Young People's Workforce
- **NCFE CACHE Level 3 Diploma**
Children and Young People's Workforce (Social Care)

About These Qualifications:

These qualifications will develop the learner's knowledge and awareness of the types of provision in the Health, Social Care and Children's and Young People's sectors. They include the roles played by workers – from principles and values, through to health and safety and working with others.

The Level 1 qualification is aimed at learners who wish to develop an understanding of Health & Social Care settings before deciding whether working in the sector is for them. It helps learners to gain the knowledge, understanding and skills required for employment and/or career progression in the industry, allowing them to tailor their learning to their interests through the provision of a broad range of optional units.

At Level 2 and 3, learners will explore a range of topics including health and safety, equality and diversity in the workplace, and child development. They will also be placed in a suitable childcare setting as a vocational work placement, where they will be supervised and mentored throughout the course.

These courses may assess learners through a portfolio of evidence, practical workplace observation and online assessment.

Each qualification supports learners in progressing to the course at the next level of study. All our Health & Social Care courses supporting progression into employment in the social care industry, in roles including teaching and learning workers, foster carers, children and families social workers, registered managers of children's homes, plus deputy and assistant managers, residential childcare workers children and family court advisory and support service advisers, youth workers, community care officers, professional assistants, or family centre workers.

About this Course



This course will cover technical training in voice, movement and acting, whilst offering theory units like Performing Arts Business and Careers. The emphasis is on practical training but you will also be expected to complete written work. The course focuses on the genre of Musical Theatre- dance, acting and singing- and you will be expected to contribute to performances in front of a range of audiences.

This course will be assessed via observation of performance and a portfolio evidencing your knowledge.

This course will support learners who aim to build a career within the performing arts industry. Learners who complete the Level 2 Diploma can progress to Level 3. Level 3 learners could move on to higher education or move into jobs in the Performing Arts industry.

Performing Arts

Qualifications Available:

- **Aim Level 2 Diploma**
Skills for Working in Creative and Design Industries
- **Pearson Level 3 Diploma**
Performing Arts

About These Qualifications:

If you are serious about a career in Performing Arts, you can never start studying too soon. Specialising at age 16 is a great start and a one-year full-time vocational course will offer you a depth of education and training. You will develop a broad spectrum of understanding across the industry as well as honing and developing techniques. The skills you gain from your vocational Performing Arts course will include transferable ones that will help you apply for a range of jobs in the future.

Sports Coaching

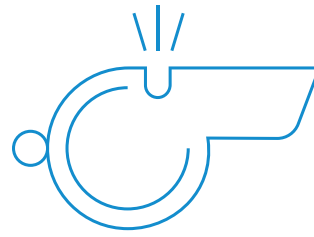
Qualifications Available:

- **NCFE Level 2 Diploma**
Sports Coaching

About This Qualification:

Sports coaching is a fantastic way for you to get involved in a sport you love. A qualification in sports coaching will give you the opportunity to take an active role in the development, instruction and training of individuals and teams rather than just standing on the sidelines.

Learners will develop



About this Course

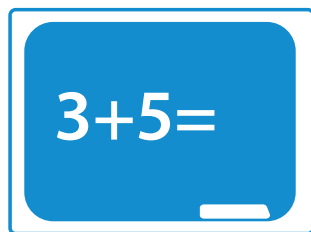
Learners will complete three mandatory units: *participating in sports, sports coaching and developing sporting skills and tactical awareness.*

As a sports coaching student, you will be coaching in a variety of environments. These could include coaching within a college or school; coaching at a local sports club; coaching university teams. You might even end up coaching a professional sportsperson or team!

This course is assessed through a portfolio of evidence and observation of work-based practice.

Learners who complete the Level 2 Diploma can consider progressing to higher level level courses in similar fields, or even degree level study. This qualification can also support learners looking to move into related jobs, such a personal training, sports coaching or activity leadership.

About this Course



The Supporting Teaching & Learning in Schools Level 2 programme will give you the core knowledge needed to take the first steps to working in a school. You will learn how to communicate effectively with children, young people and adults and gain an understanding of how children and young people develop. You will be aware of what to do in different situations when working within the school environment.

The Supporting Teaching & Learning in Schools Level 3 programme will give you the core knowledge needed to take the first steps to working in a school. You will learn how to communicate effectively with children, young people and adults and gain understanding of how children and young people develop. It may also help you secure that all important Teaching Assistant job!

These courses are assessed through a portfolio of evidence and observation of work-based practice.

Learners achieving the Level 3 Diploma can progress onto the Level 4 Certificate for the Advanced Practitioner in Schools and Colleges, a foundation degree, or specialist roles within the workforce.

All courses support progression to roles in early years education, such a day assistant in nursery schools or primary nurseries.

Supporting Teaching & Learning

Qualifications Available:

- **Level 2 Award**
Support Work in Schools and Colleges
- **Level 2 Certificate**
Support Work in Schools and Colleges
- **Level 3 Diploma**
Support Work in Schools and Colleges

About These Qualifications:

The Level 2 qualifications provide an introduction to the knowledge and understanding needed to work in a school or college environment. Learners develop transferable skills that apply to the many varied roles that full and part-time support staff may fulfil, including administrative roles, site support roles, technical roles and volunteers, as well as roles working with young people.

Level 3 provides learners with an in-depth understanding of the knowledge and skills needed to work directly with children and young people in school and college environments. It covers all aspects of specialist support including planning, delivering and reviewing assessment strategies to support learning alongside the teacher, bilingual support, special needs support, personal development and reflective practice.

Travel & Tourism

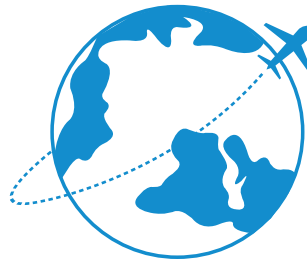
Qualifications Available:

- **NCFE Level 1 Certificate**
Travel & Tourism
- **NCFE Level 2 Certificate**
Travel & Tourism

About This Qualification:

The Level 1 course is designed for learners with no experience in travel and tourism who wish to develop their knowledge of the industry and explore potential career paths. Learners who gain this qualification can progress directly to the Level 2 course.

The Level 2 qualification is designed for learners who want to go on to further learning at Level 3 or into a relevant Travel and Tourism role. It is particularly relevant for those aged 16-18 undertaking a large programme of full-time study, but is also relevant to adult learners who may be changing career or entering a new industry.



About this Course

While completing these qualifications, learners may develop the knowledge, understanding and essential skills employers look for in this industry. These range from familiar 'key skills' such as team working, independent learning and problem solving, to important personal values such as an appreciation for appropriate behaviour and dress, appropriate interpersonal skills, communicating with professional colleagues, supporting other aspiring employees, personal manners and conduct, understanding work practices and how different roles and departments function within travel organisations.

These courses are assessed through a portfolio of evidence and observation of work-based practice.

Learners who gain the Level 2 Certificate can consider moving on to Level 3, which could lead to further study, potentially at degree level. These courses also support progression into the workforce. Careers in the travel and tourism industry include air cabin crew, hotel management, tour guides as well as tourist information and travel agency roles.

About this Course



The primary purpose of this qualification is to prepare you to enter employment in the Uniformed Services sector. This qualification is designed to give you a good insight into the practical activities which the uniformed services require. You will research and visit a range of extended uniformed services, developing a broad understanding of the uniformed services sector, investigating employment opportunities, developing well-being, physical fitness and self-discipline, building team-working skills, and understanding health and safety. Optional units may provide opportunities to carry out map reading and navigation, explore volunteering opportunities, participate in competitive sport and take part in adventurous activities.

These courses are assessed through a portfolio of evidence and observation of work-based practice.

Learners who achieve at Level 1 might consider progression to Level 2 qualifications in areas such as Entry to the Uniformed Services, Outdoor Activity Leadership, Team Leading, Sport and Public Services. Successful completion of the Level 2 course could lead to employment in a number of job roles in the uniformed services, which include the Army, Navy, RAF, Ambulance Service, Fire and Rescue Service, Police, Coastguard, Prison Service and more. Level 3 learners may have the option to progress to higher education study.

Uniformed Public Services

Qualifications Available:

- **Level 1 Diploma**
Entry into the Uniformed Services
- **Level 2 Diploma**
Entry into the Uniformed Services
- **Level 3 Diploma**
Entry into the Uniformed Services

About These Qualifications:

These qualifications aim to provide informed and prepared potential recruits. They enable learners to prepare to make a recruitment application or provide a basis for further study and progression towards the entry qualification of a specific service, providing learners with an insight into the practical qualities they require, not only for uniformed services, but also for employment in general.

Working with Children (Early Years)

Qualifications Available:

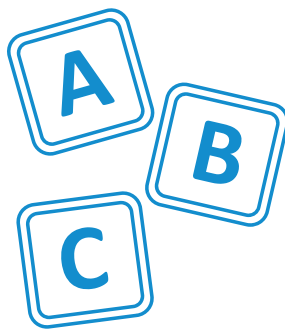
- **Level 1 Diploma**
Caring for Children
- **Level 2 Certificate**
Caring for Children
- **Level 3 Diploma**
Early Years Workforce (Educator)

About this Qualification:

The Level 1 course is designed for learners who like working with children, want to pursue a career in Early Years and are looking to gain the skills to achieve this.

The Level 2 Certificate focuses on the emotional wellbeing of children and young people, their development, milestones and education.

The Level 3 childcare qualification is the leading standard in early years' education. Set against the Early Years Foundation Stages (EYFS) framework, it provides key training to work with children below the age of 5, as well as an in-depth understanding of youngsters up to 7 years old. For those looking to train in Early Years Education, this is the ideal qualification.



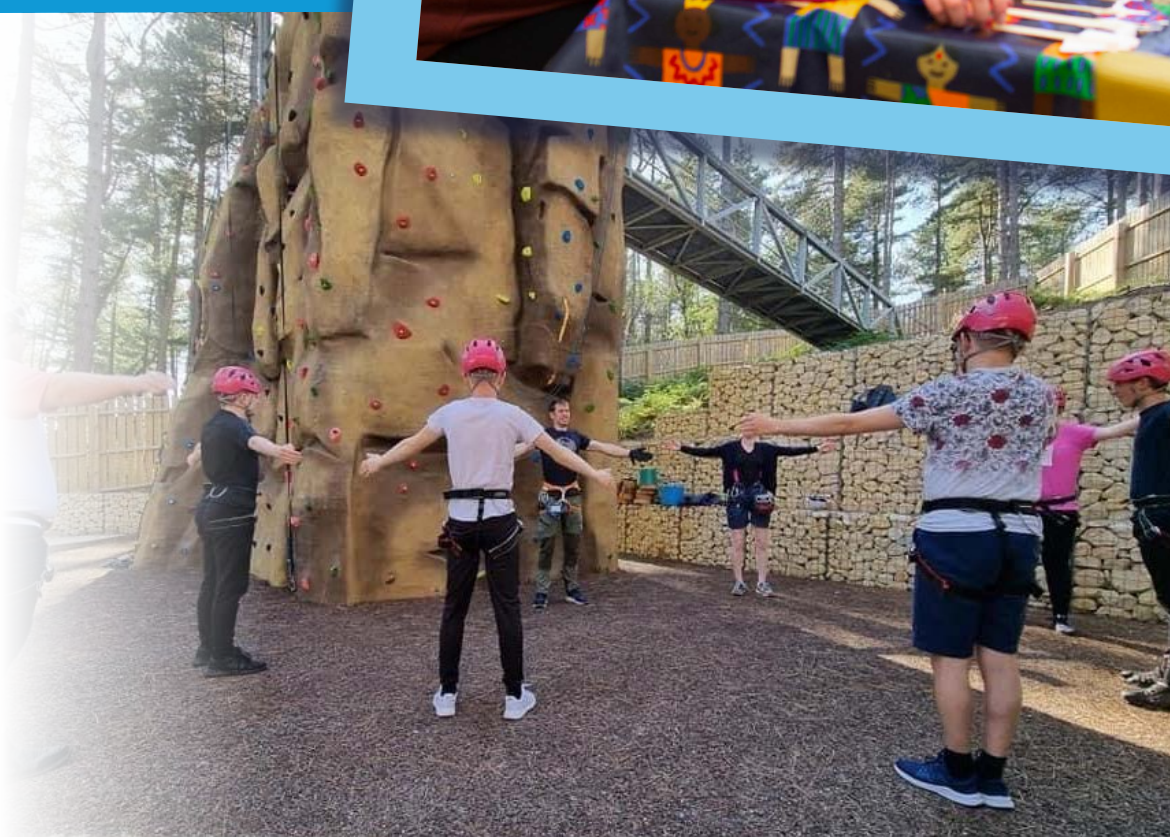
About this Course

In all our childcare courses, you'll learn about the growth and development of young children, job roles within Early Years Education and how to provide activities to help children develop. You will also gain personal learning skills, an awareness of equality, health and safety, and communication. Learners receive great tuition and support throughout the course, which will include a variety of coursework and case studies. At higher levels, learners focus on safeguarding the welfare of children, exploring how early learning and healthy diet play an important role in the developmental, emotional and physical wellbeing of children, as well as exploring the various accident prevention and fire safety methods.

At Level 3, you'll learn how to meet all of the physical, social, and emotional needs of children under 5 whilst also gaining knowledge of how best to work with children aged 5-7. You'll explore how to support a healthy lifestyle through nutrition and exercise, how to promote children's speech and language skills, as well as gaining other vital knowledge regarding safeguarding and health and safety legislation.

These courses are assessed by an online assessment and a portfolio of work based evidence.

Learners who complete their courses can progress directly to courses at higher levels of study or transfer to the workforce to pursue a career in Early Years Education. Higher level courses may help learners secure supervisory or management positions.





Results

Our A-Level performance and results are consistently improving, year on year. We're committed to helping our students build their academic progress and do their best.



Parental Involvement

We encourage parents and carers to get involved in their childrens' education, and let us know how we're doing. We communicate with parents using the ClassCharts educational app.

How to Apply

If you'd like to apply for any of the SCA6 or ATTFE courses, you can do so online. Simply scan the qr code on the next page, or follow the link provided to fill in the form.

If you'd like more information about specific courses we offer, you can cotact us. For information on our careers programme, contact our Careers Leader Jayne Drury at jayne.drury@attrust.org.uk. Email addresses and contact numbers for general enquiries can be found on the back cover of this prospectus. Alternatively, visit our websites at suttonacademy.attrust.org.uk and attfe.org.uk for more information.



Results

We're proud of our rates of success, with over 94% of our 16-19 students acheiving their qualifications.



Transition Support

We know a lot of our learners are starting out in a new field without much experience. To help smooth the process, we provide introductory transition support work on our website.



Community & Charity

We encourage students to get involved in their local community and charity initiatives. Each year group chooses a charity to fundraise for, organising events throughout the year.



Careers Advice

Our robust careers programme helps our students achieve their future aspirations, offering work experience placements, university lectures and apprenticeship events.



Scan the QR code or follow this link:

<https://bit.ly/31MkPbL>



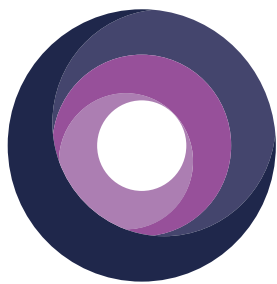
Community & Charity

ATTFE works closely with local charities and initiatives; we are dedicated to serving the communities around us. We're proud to offer learners the opportunity to get involved.



Careers Advice

Our careers guidance helps learners take their next steps with confidence, whether progressing to further study or directly into work. We provide one-on-one sessions with a careers advisor.



SUTTON
COMMUNITY
ACADEMY



 @suttoncommunityacademy

 @suttonacademy

 suttonacademy.attrust.org.uk

 SCA-office@attrust.org.uk

 01623 980055

 @AcademyTransformationTrust
FurtherEducationCollege

 @ATT_FECollege

 attfe.org.uk

 college.info@attrust.org.uk

 01623 441310

 High Pavement,
Sutton-in-Ashfield,
NG17 1EE

